

# optomap<sup>®</sup>

## Retinal Exam

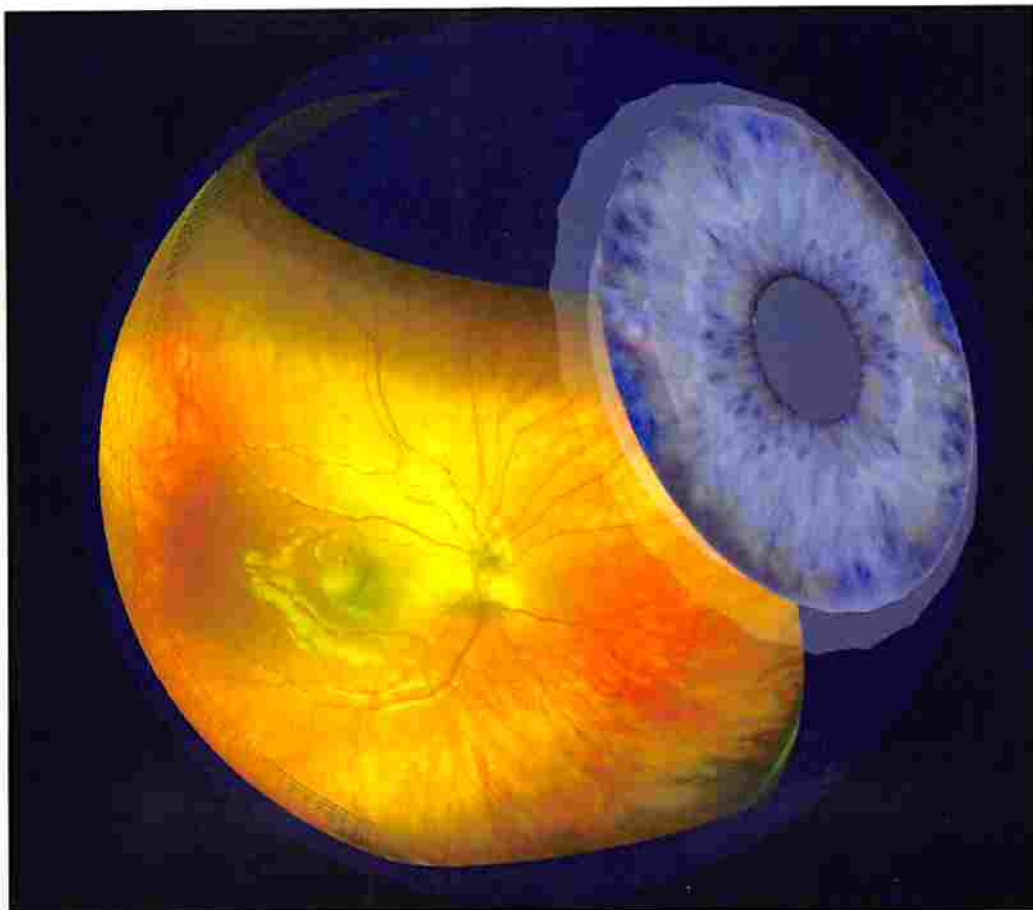
At **Invision Eyecare**, we pride ourselves on providing our patients with the best possible standard of care. **Because of this, we now perform the optomap<sup>®</sup> Retinal Imaging Exam with all of our patients as part of your yearly eye exam.**

This fast & easy imaging procedure takes a panoramic view of your retina, & allows your doctor to see retinal problems such as macular degeneration, glaucoma, retinal holes and detachments, melanomas, cancer and diabetic retinopathy, ***without dilation*** for most patients.

**The Doctors of Invision Eyecare believe that the optomap<sup>®</sup> Retinal Exam is an essential part of your comprehensive eye exam and recommend it for all patients once per year.**

The **\$29.00** fee for this procedure is generally a non-covered service unless being used to actively follow disease. Any questions you have about the optomap<sup>®</sup> Retinal Exam can be directed to your Doctor when they review the images with you during your examination.

### optomap<sup>®</sup> Retinal Exam Example



# Comparison of Fields of View

An **optomap** retinal image compared to conventional devices in a single capture.

optomap Ultra-widefield Retinal image (200°)



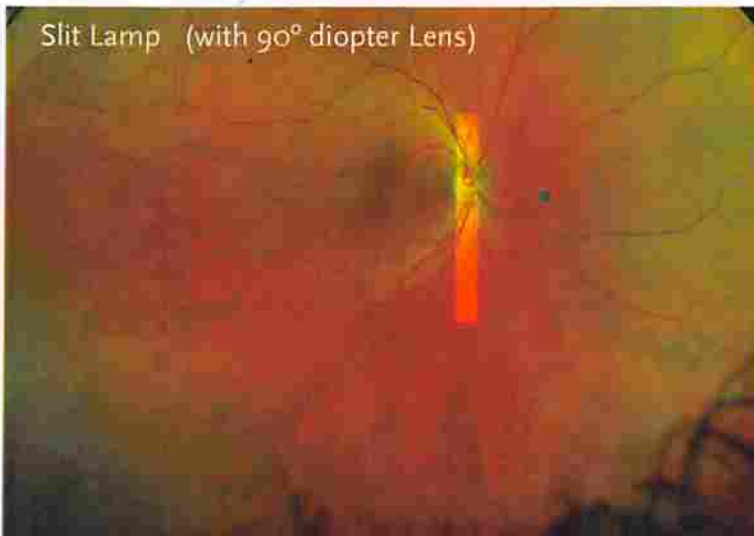
Fundus Camera (~45°)



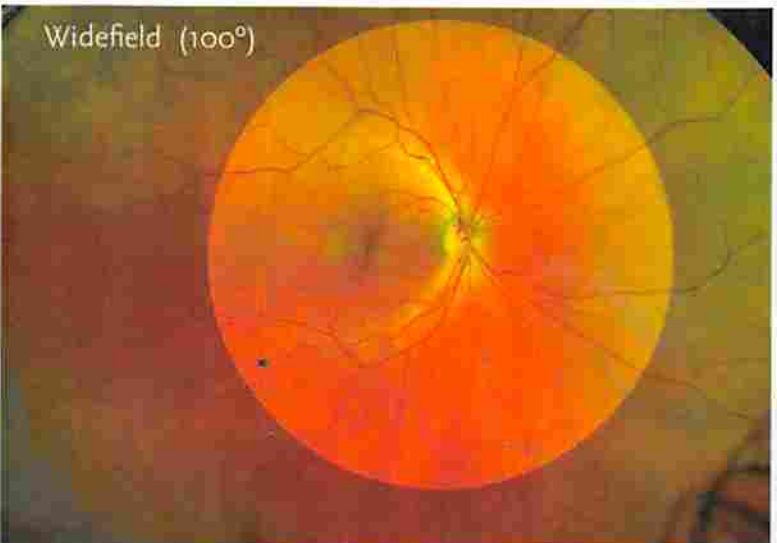
Indirect Ophthalmoscope (~30°)



Slit Lamp (with 90° diopter Lens)



Widefield (100°)



ETDRS Standard

