

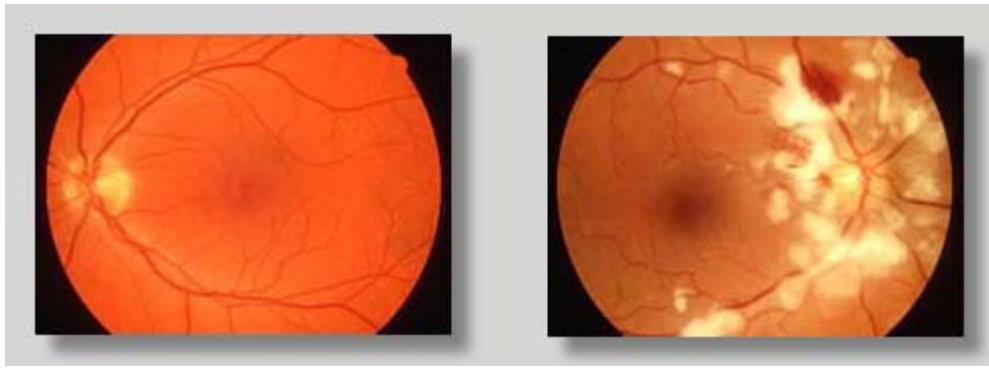


DIGITAL RETINAL PHOTOGRAPHY

Many eye diseases that can cause partial vision loss or blindness can be detected with retinal photography.

Some of the most common diseases are:

- ◆ Macular degeneration
- ◆ Glaucoma,
- ◆ Retinal holes and detachments
- ◆ Diabetic retinopathy
- ◆ Additionally, systemic diseases such as diabetes and the effects of high blood pressure can be detected during a retinal exam.



Healthy Retina

Diseased Retina

Attention: The Retinal Photography is NOT covered by insurance. However, our doctors recommend this procedure for all patients. A Retinal Photograph can be performed for an additional **\$39.00**.

Retinal photography provides:

- ◆ An annual eye wellness screening photograph
- ◆ An overview of the images
- ◆ An in depth view of the retina (where diseases first manifest themselves)
- ◆ An analysis of past and present photographs

We at Invision Eyecare are proud to provide our patients with a thorough and highly advanced comprehensive exam. We are concerned about all eye health problems and provide the most modern technology to our patients for the best possible care.

IF YOU ARE INTERESTED IN DIGITAL RETINAL PHOTOGRAPHY OR HAVE ANY QUESTIONS PLEASE
ASK ANY OF OUR HIGHLY QUALIFIED STAFF MEMBERS

_____ I would like to have retinal photography
_____ I would **NOT** like to have retinal photography

Patient Signature: _____ Date: _____